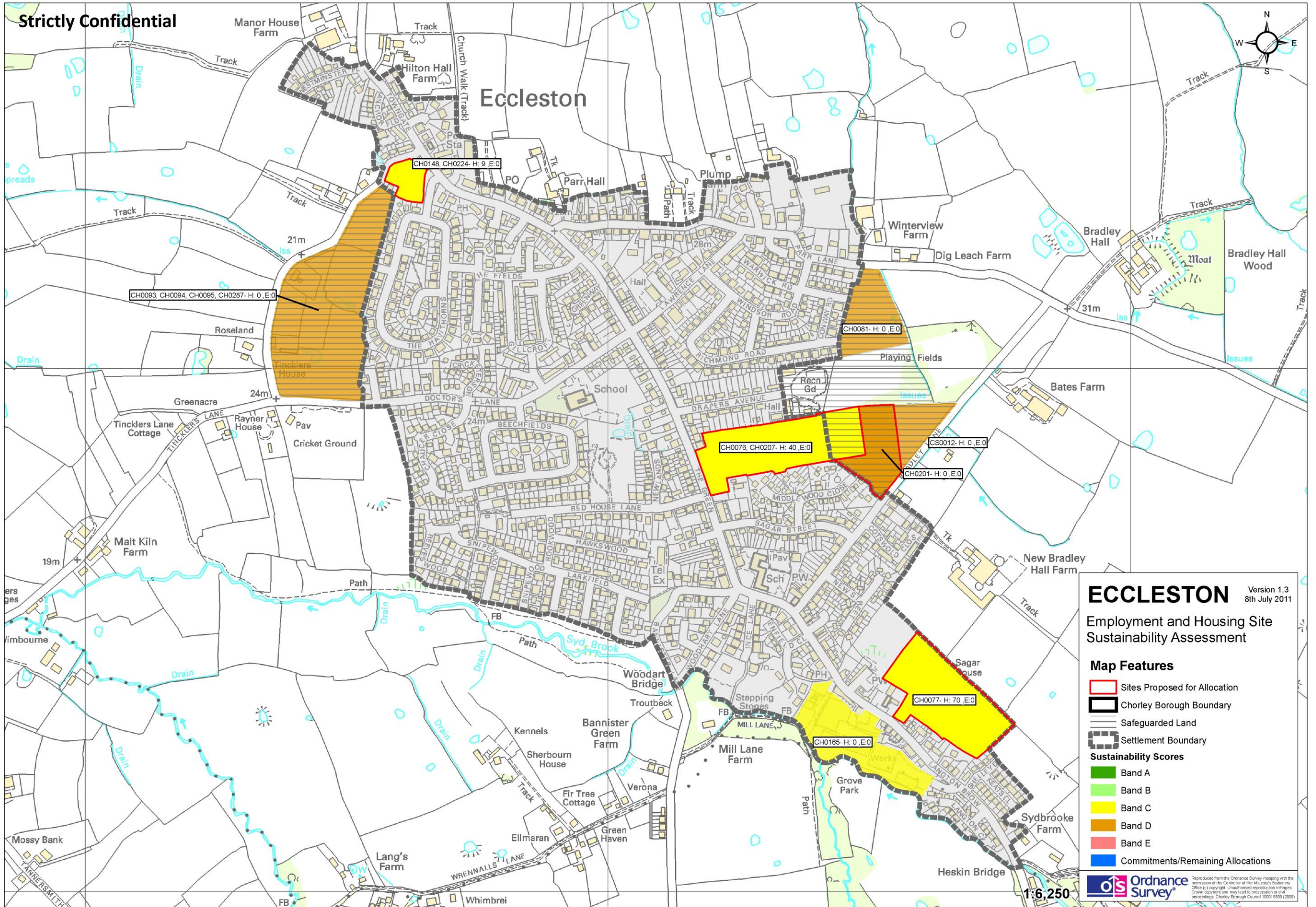


Strictly Confidential



ECCLESTON

Version 1.3
8th July 2011

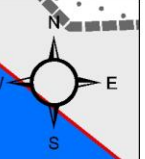
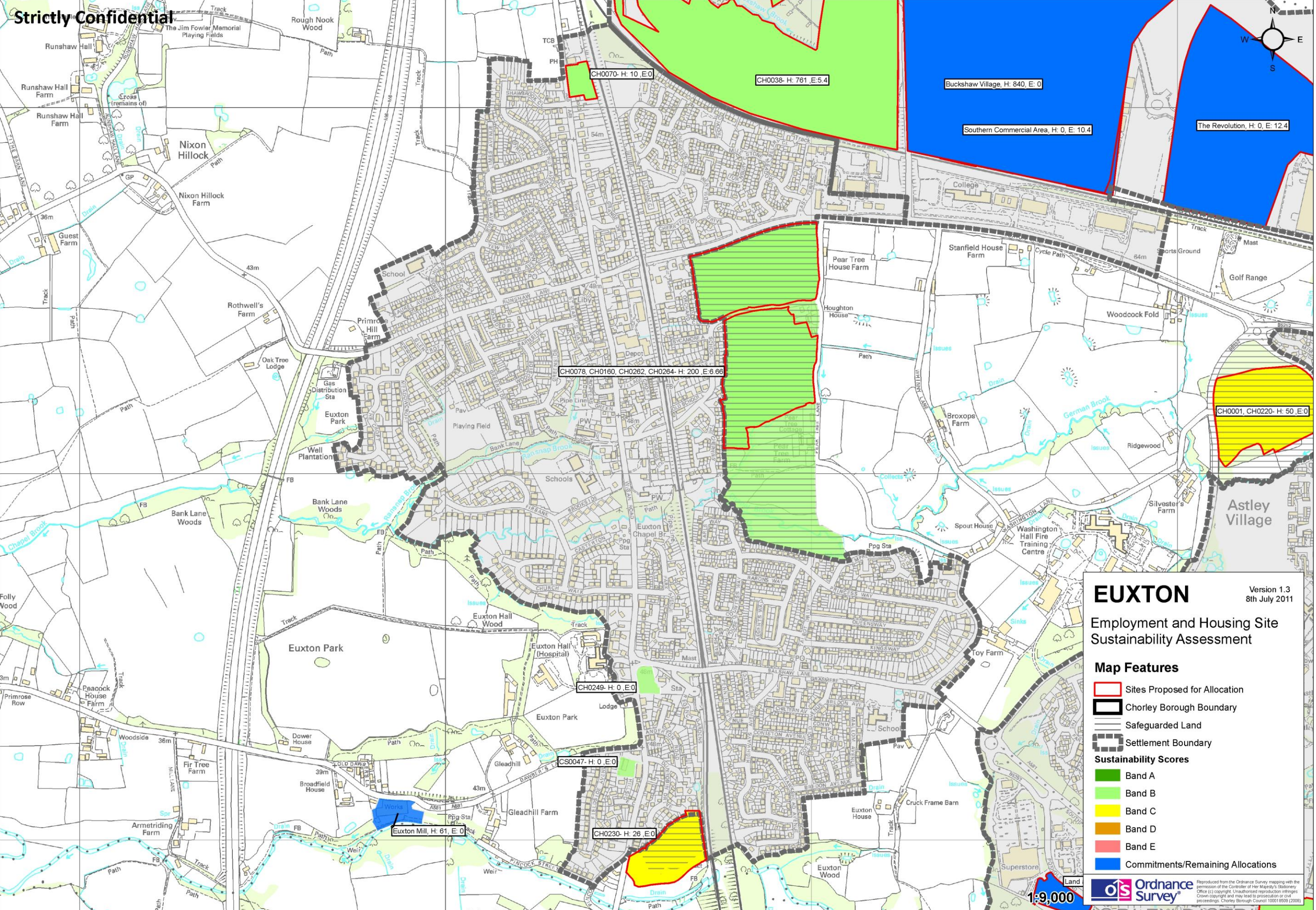
Employment and Housing Site Sustainability Assessment

Map Features

- Sites Proposed for Allocation
 - Chorley Borough Boundary
 - Safeguarded Land
 - Settlement Boundary
- ### Sustainability Scores
- Band A
 - Band B
 - Band C
 - Band D
 - Band E
 - Commitments/Remaining Allocations

1:6,250

Strictly Confidential



EUXTON Version 1.3
8th July 2011

Employment and Housing Site Sustainability Assessment

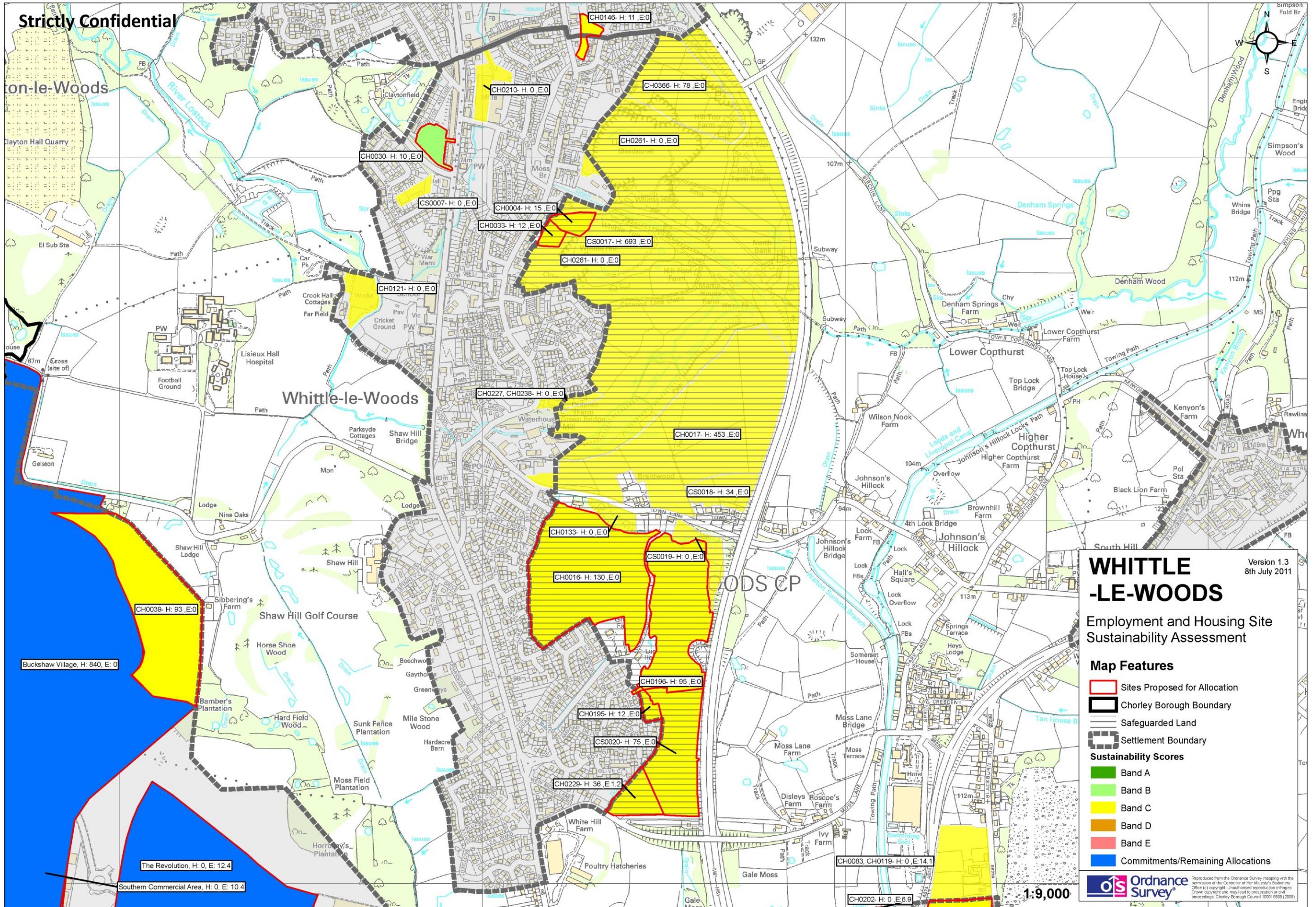
Map Features

- Sites Proposed for Allocation
 - Chorley Borough Boundary
 - Safeguarded Land
 - Settlement Boundary
- Sustainability Scores**
- Band A
 - Band B
 - Band C
 - Band D
 - Band E
 - Commitments/Remaining Allocations

Ordnance Survey
Reproduced from the Ordnance Survey mapping with the permission of the Controller of Her Majesty's Stationery Office (C) copyright. Unauthorised reproduction infringes Crown copyright and may lead to prosecution or civil proceedings. Chorley Borough Council 1001 6939 (2008)

1:9,000

Strictly Confidential



Version 1.3
8th July 2011

WHITTLE -LE-WOODS

Employment and Housing Site Sustainability Assessment

Map Features

- Sites Proposed for Allocation
- Chorley Borough Boundary
- Safeguarded Land
- Settlement Boundary

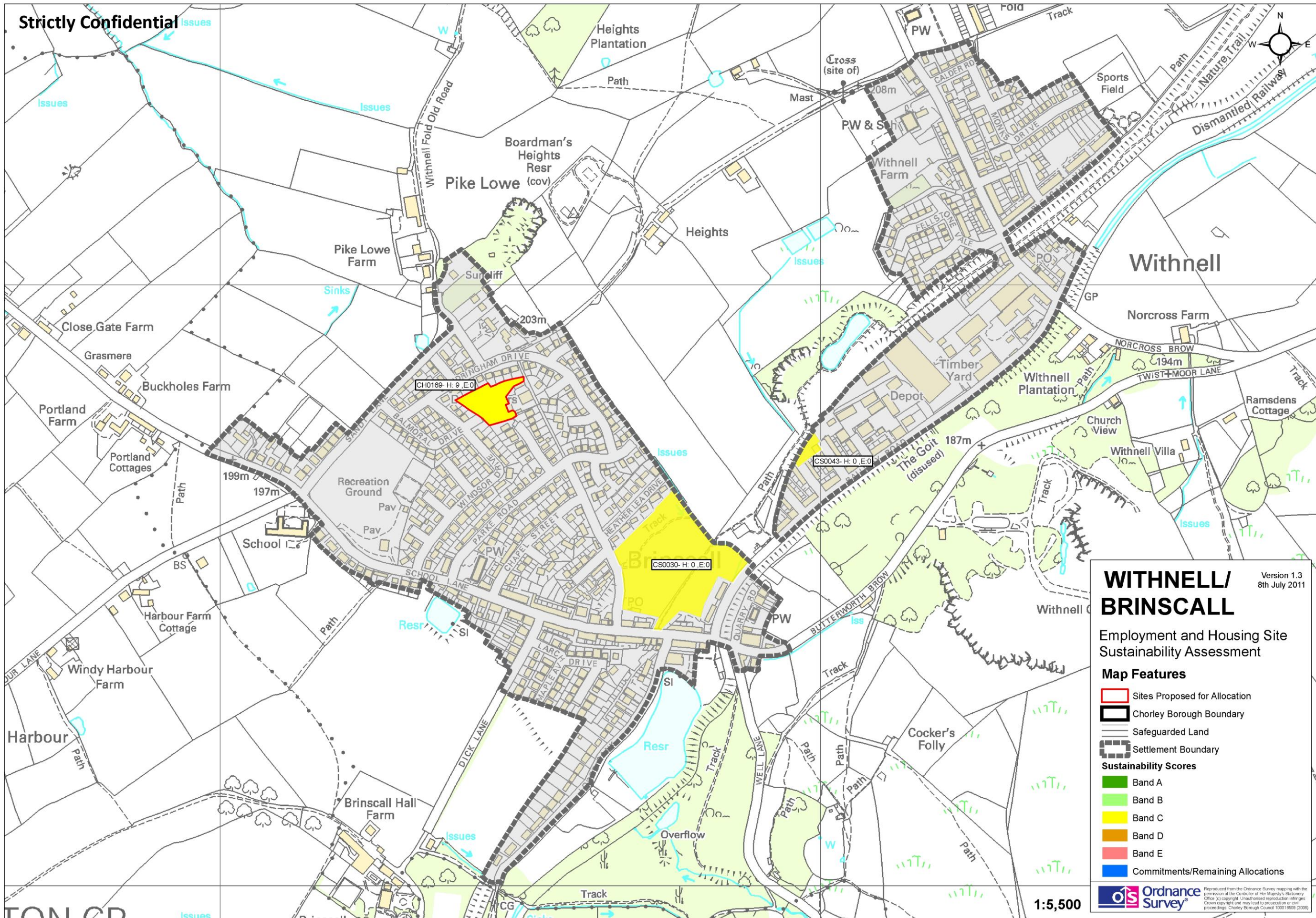
Sustainability Scores

- Band A
- Band B
- Band C
- Band D
- Band E
- Commitments/Remaining Allocations

Ordnance Survey
Reproduced from the Ordnance Survey mapping with the permission of the Controller of Her Majesty's Stationery Office (C) copyright. Unauthorised reproduction infringes Crown copyright and may lead to prosecution or civil proceedings. Chorley Borough Council 10081 6938 (2/08)

1:9,000

Strictly Confidential



WITHNELL/ BRINSCALL

Version 1.3
8th July 2011

Employment and Housing Site
Sustainability Assessment

Map Features

- Sites Proposed for Allocation
- Chorley Borough Boundary
- Safeguarded Land
- Settlement Boundary

Sustainability Scores

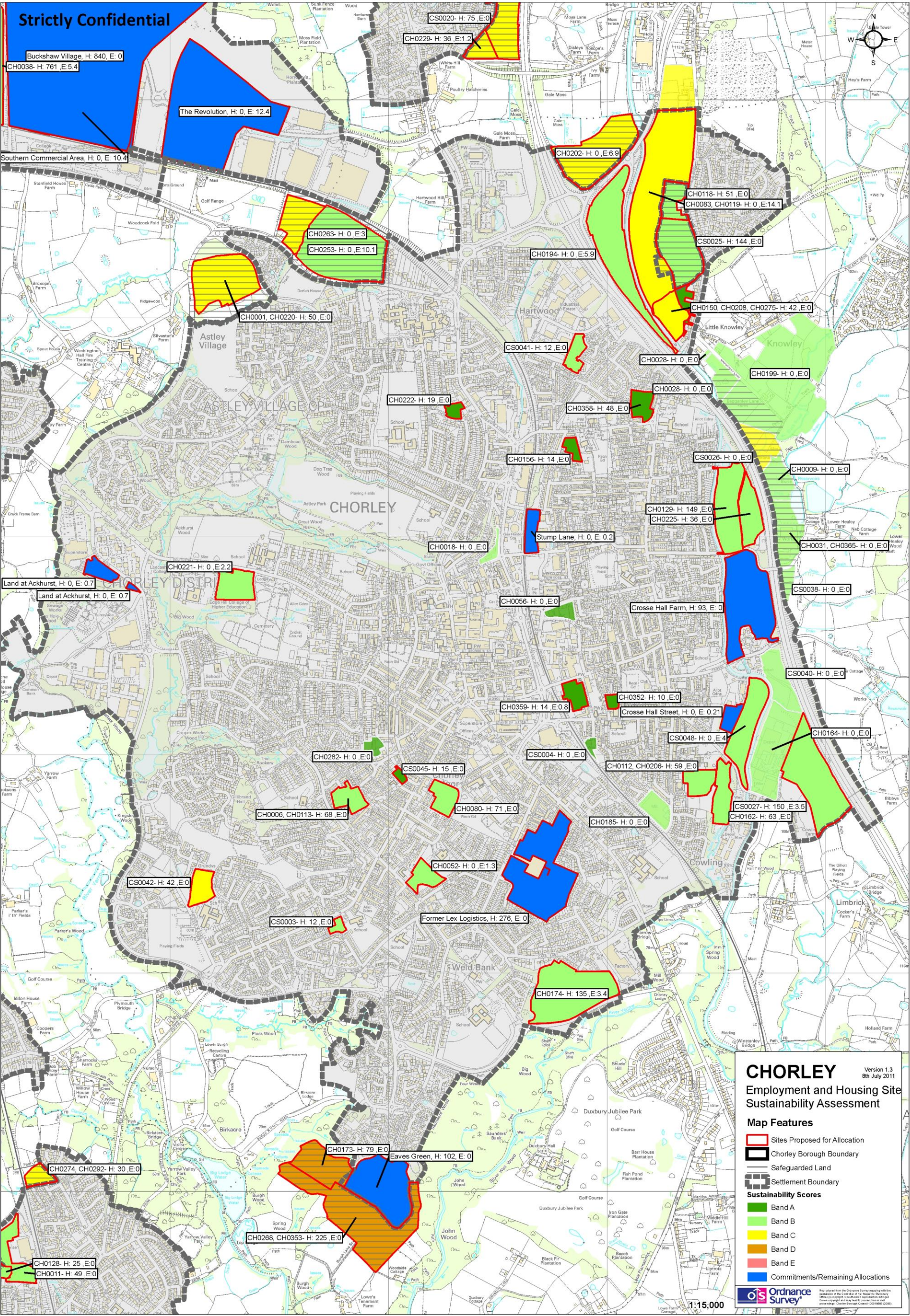
- Band A
- Band B
- Band C
- Band D
- Band E

- Commitments/Remaining Allocations



Reproduced from the Ordnance Survey mapping with the permission of the Controller of Her Majesty's Stationery Office (C) copyright. Unauthorised reproduction infringes Crown copyright and may lead to prosecution or civil proceedings. Chorley Borough Council 100016939 (2008)

1:5,500



Strictly Confidential

Buckshaw Village, H: 840, E: 0
CH0038- H: 761, E: 5.4

The Revolution, H: 0, E: 12.4

Southern Commercial Area, H: 0, E: 10.4

CS0020- H: 75, E: 0

CH0229- H: 36, E: 1.2

CH0202- H: 0, E: 6.9

CH0263- H: 0, E: 3

CH0253- H: 0, E: 10.1

CH0194- H: 0, E: 5.9

CH0118- H: 51, E: 0

CH0083, CH0119- H: 0, E: 14.1

CS0025- H: 144, E: 0

CH0001, CH0220- H: 50, E: 0

Astley Village

CS0041- H: 12, E: 0

CH0150, CH0208, CH0275- H: 42, E: 0

CH0028- H: 0, E: 0

CH0199- H: 0, E: 0

CH0222- H: 19, E: 0

CH0358- H: 48, E: 0

CH0028- H: 0, E: 0

CH0009- H: 0, E: 0

CH0156- H: 14, E: 0

CS0026- H: 0, E: 0

CH0129- H: 149, E: 0

CH0225- H: 36, E: 0

CH0031, CH0365- H: 0, E: 0

Land at Ackhurst, H: 0, E: 0.7

Land at Ackhurst, H: 0, E: 0.7

CH0221- H: 0, E: 2.2

CH0018- H: 0, E: 0

CH0056- H: 0, E: 0

Crosse Hall Farm, H: 93, E: 0

CS0038- H: 0, E: 0

CS0040- H: 0, E: 0

CH0352- H: 10, E: 0

Crosse Hall Street, H: 0, E: 0.21

CS0048- H: 0, E: 4

CH0184- H: 0, E: 0

CH0282- H: 0, E: 0

CS0004- H: 0, E: 0

CH0112, CH0206- H: 59, E: 0

CS0027- H: 150, E: 3.5

CH0162- H: 63, E: 0

CH0006, CH0113- H: 68, E: 0

CH0080- H: 71, E: 0

CH0185- H: 0, E: 0

CS0042- H: 42, E: 0

CS0003- H: 12, E: 0

Former Lex Logistics, H: 276, E: 0

CH0174- H: 135, E: 3.4

CH0173- H: 79, E: 0

Eaves Green, H: 102, E: 0

CH0268, CH0353- H: 225, E: 0

CH0274, CH0292- H: 30, E: 0

CH0128- H: 25, E: 0

CH0011- H: 49, E: 0